

WEMBLEY PARK REPTON GARDENS

HEATING & DOMESTIC WATER USER MANUAL



HEATING & DOMESTIC WATER GUIDE

1.1 - Heating Water

Heating water (LTHW) is provided directly from the central building supply. There is no boiler/HIU installed within the apartment.

LTHW is fed in a continual circuit to and from radiators within each property via a central heat source (landlords boilers).

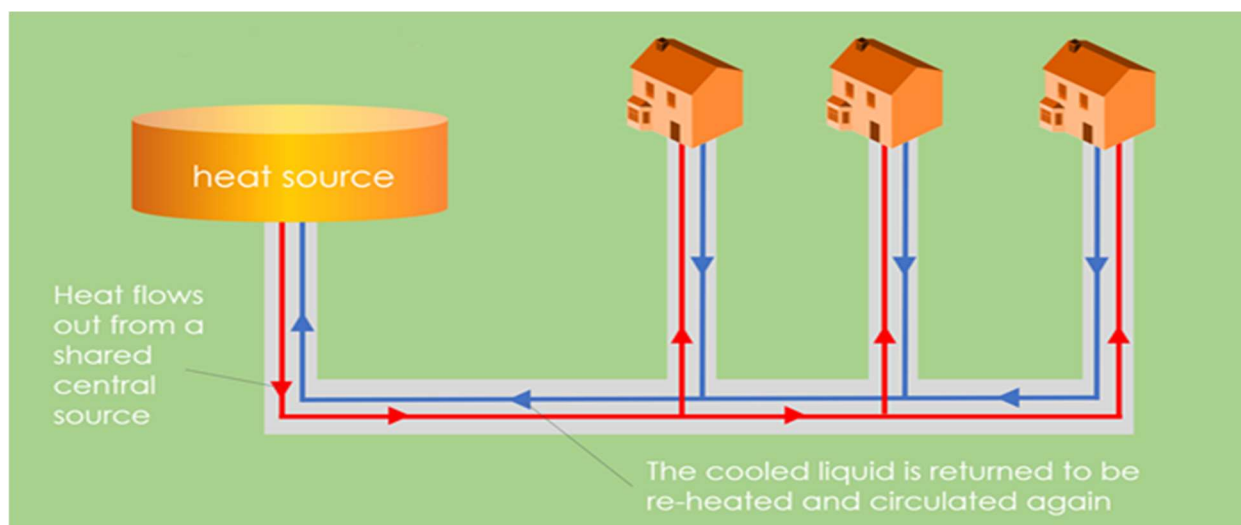


Figure 1.1A - An LTHW Schematic Diagram

LTHW usage is recorded by way of a dedicated heat meter, which is installed outside of the apartment and can be read remotely by your utility provider.

HEATING & DOMESTIC WATER GUIDE

1.2 - Space Heating

Space heating within the apartment is provided by radiators within each room/area. The system as a whole is managed by an electrical receiver box within the utility cupboard.

The receiver box is linked to a smart thermostat, which may be used to programme a target temperature (or 'set point') within the property.



Figure 1.2A - The Heating System Smart Thermostat
Make: Honeywell - Model: Lyric T6

Once a set point has been selected, 21°C for example, the receiver box will automatically enable/disable the radiators in order to achieve and maintain it. This demand based system results in lower bills and a smaller environmental impact than a traditional manually operated central heating installation.

The Honeywell Lyric T6 is an easy-to-use smart thermostat that allows you to take control of the heating system with your smartphone, tablet or voice controlled assistant.

HEATING & DOMESTIC WATER GUIDE

1.3 - Domestic Hot & Cold Water

Domestic hot water is provided directly from the central building supply. There is no boiler/HIU installed within the apartment. Cold water is also distributed directly to taps, shower mixers and white goods from outside the property.

Domestic water usage is recorded by way of dedicated water meters (1 for hot, 1 for cold), which are installed outside of the apartment and can be read remotely by your utility provider.

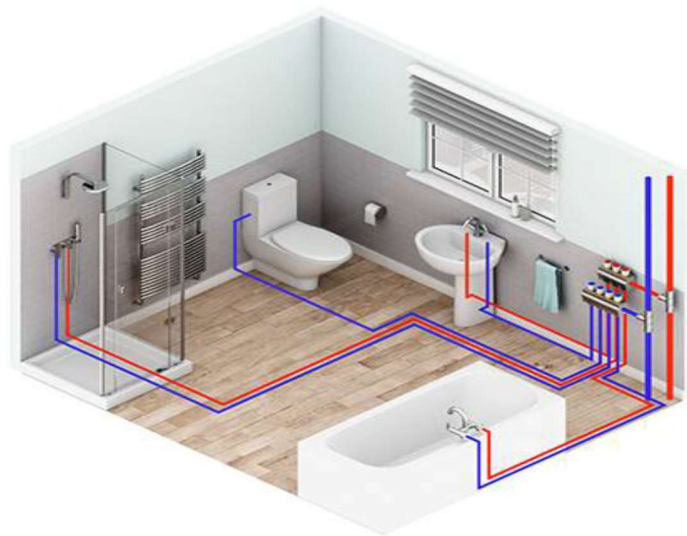


Figure 1.3A - A Domestic Water Schematic Diagram

Domestic hot water pipework within larger apartments is provided with an electrical trace heating system, which is designed to ensure that the correct water temperature is maintained throughout the property. This feature is managed by a trace heating controller installed within the utility cupboard.

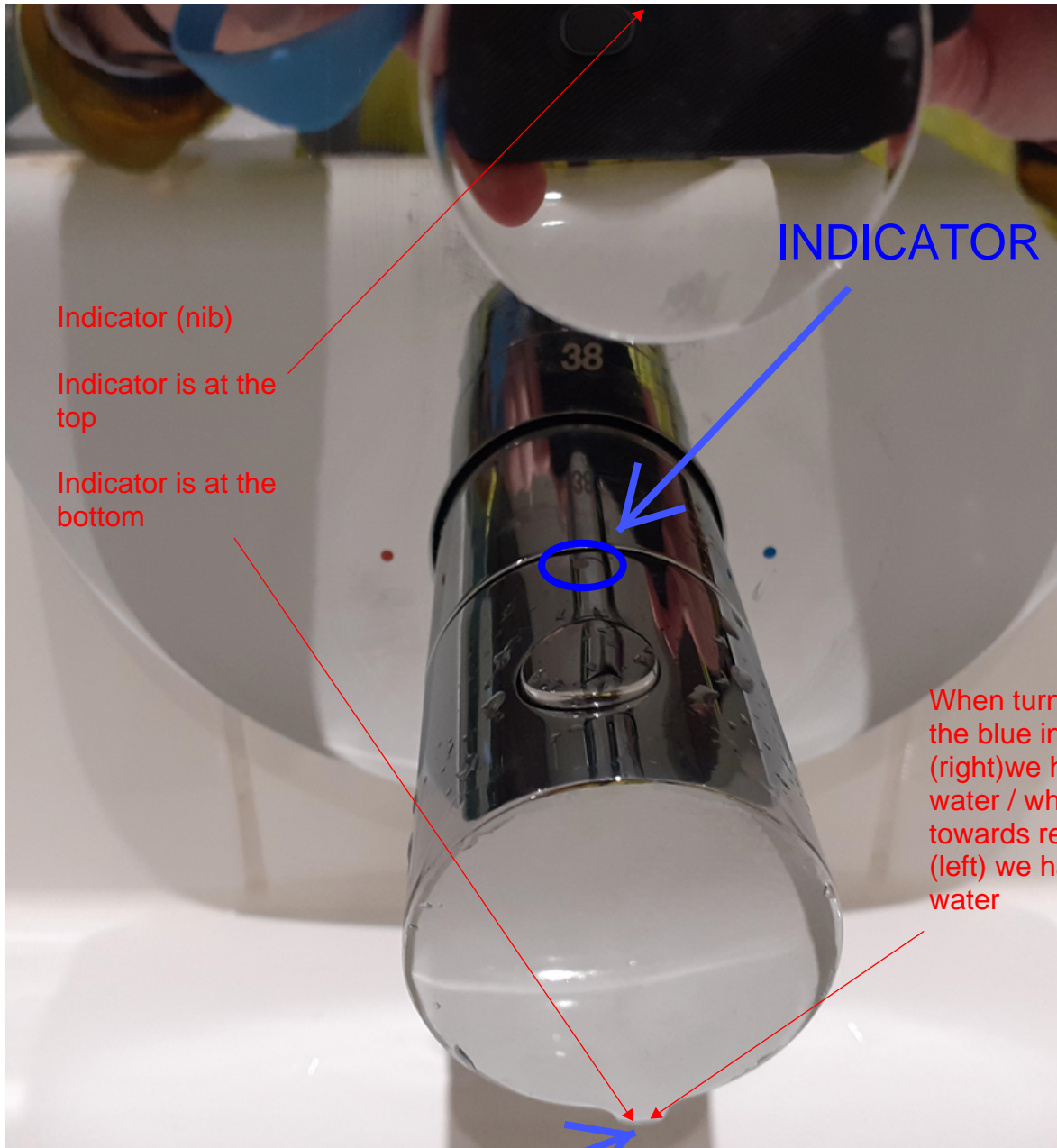
Isolation valves (stop cocks) for the hot and cold water feeds are located at low level. These valves can be used to shut off the water supply to an outlet or appliance in an emergency.



Figure 1.3B - Domestic Water Isolation Valves

HEATING & DOMESTIC WATER GUIDE

1.4 - Bath/Shower Mixer Temperature Indicator Diagram



Indicator (nib)

Indicator is at the top

Indicator is at the bottom

INDICATOR

When turned towards the blue indicator (right) we have hot water / when turned towards red indicator (left) we have cold water

Anatomical grip of the handle NOT indicator

Kohler instruction

