

WEMBLEY PARK REPTON GARDENS

VENTILATION USER MANUAL



CILANTRO

MEP ENGINEERING CONTRACTORS

1.0 - VENTILATION GUIDE

1.1 - MEV Air Extraction Services

The Mechanical Extract Ventilation (MEV) system is designed to remove moist/stale air from 'wet' areas around the home. It is provided by MEV fans on the roof of the building which serve multiple apartments.

Extraction takes place via ceiling mounted valves within the utility cupboard, kitchen and bathroom areas. Extract valves are set in place during the commissioning process and must not be adjusted.



Figure 1.1A - An Extract Valve
Make: Waterloo - Model: VB/125

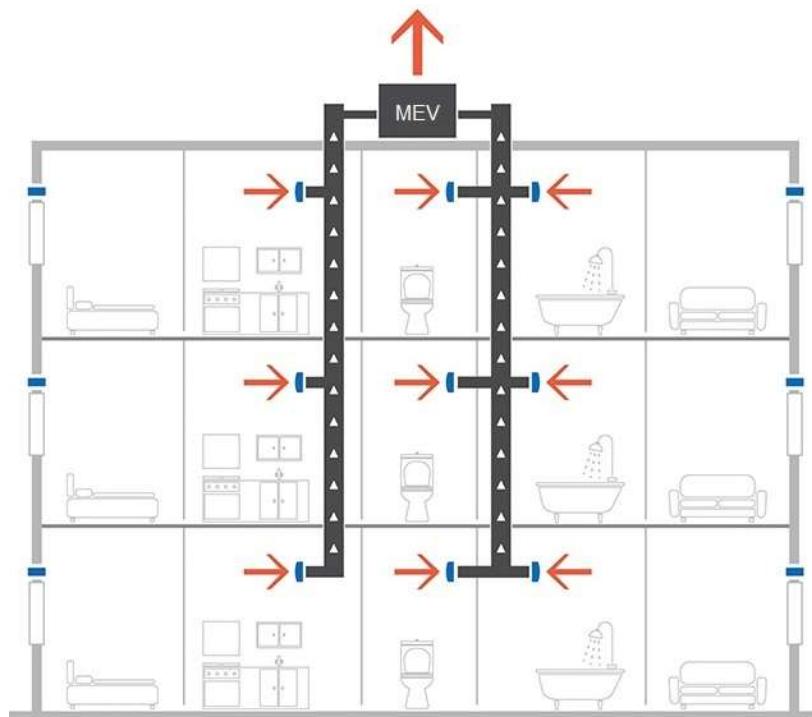


Figure 1.1B - An MEV Schematic Diagram

VENTILATION GUIDE

1.2 - MEV Operating Modes

'Trickle' Mode

This standard operating mode provides a constant, low-speed extraction service whilst minimising noise output. Working in tandem with natural fresh air inlets, trickle mode is designed to ensure constant air movement within the property (without the need for open windows).

Fresh air inlets are supplied via acoustically treated vents located within window frames, which have not been provided by Cilantro Engineering.

'Boost' Mode

Boost Mode will activate when the bathroom light switch or dedicated kitchen boost switch is in the 'on' position. Extraction will take place at increased speed to ensure any additional warm/moist air is removed efficiently.