

# DUBLIN LANDINGS

## HOT WATER USER GUIDE



**CILANTRO**  
MEP ENGINEERING CONTRACTORS

# HOT WATER GUIDE

---

## Heat Interface Unit

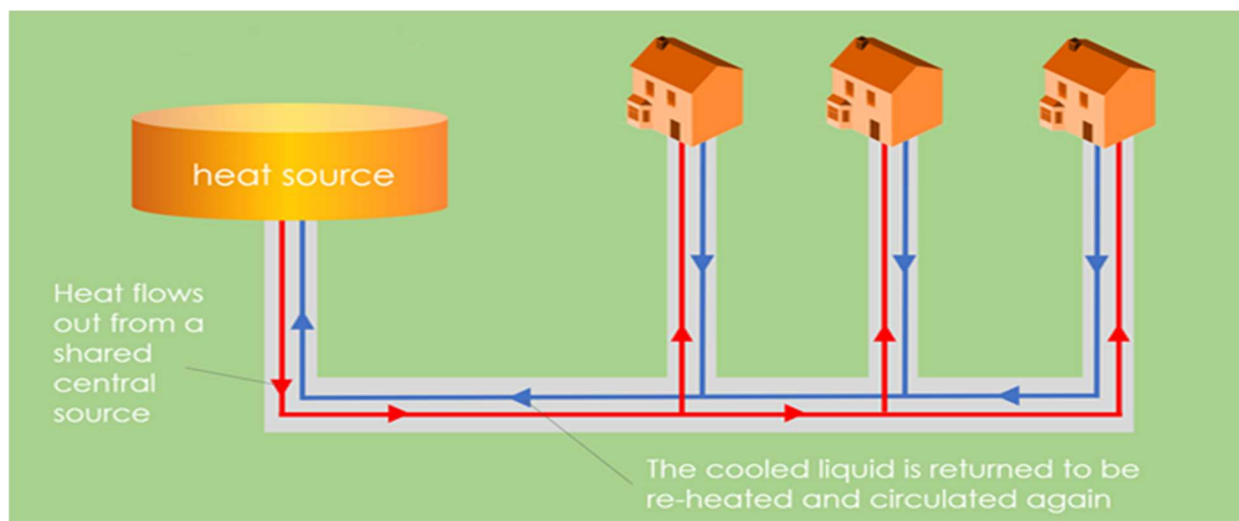
A Heat Interface Unit (HIU) is installed within the apartment utility cupboard. The HIU is manufactured by Greentherm and provides two different types of hot water:

### Domestic Hot Water (DHW)

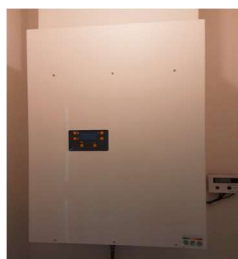
DHW is distributed to taps and applicable white goods around the home. DHW is generated by fresh, drinkable cold water being fed into the HIU and heated instantaneously upon demand.

### Low Temperature Hot Water (LTHW)

LTHW is distributed from the HIU to the apartment heating system. This pre-heated water is provided directly from the District Heating network. LTHW is fed in a continual circuit to and from each apartment via a central heat source (landlords boilers).



LTHW usage is recorded and displayed by a heat meter, which is wall mounted adjacent to the HIU. The heat meter can be read remotely by the utility company billing manager - Kaizen Energy.



*The Greentherm Heat Interface Unit*



*The SensoStar U Heat Meter*